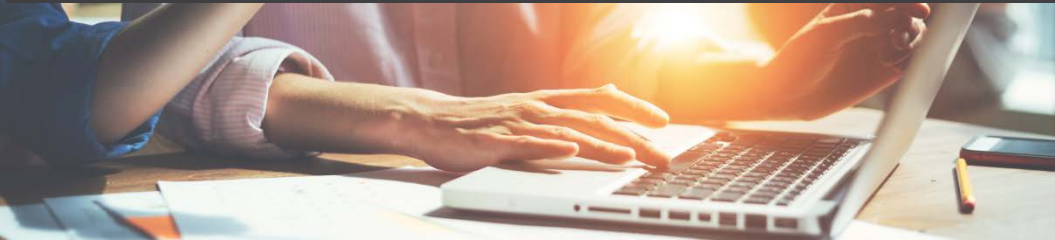


Beginning Oct. 1, 2018 Optum is expanding services for Mississippi Community Health Plan Members has expanded Medicaid Benefits adding MYPAC & PRTF covered under Mental Health Services



Newly covered services are in authorized in full collaboration for the entire state of Mississippi with [UnitedHealthcare Community Plan of Mississippi](#).

The above expansion to our network will support more services through the State of [Mississippi Division of Medicaid](#). We are one of the Coordinated Care Organizations (CCO) contracted with the State of Mississippi to manage these benefits effective October 1, 2018.

New Mental Health Services

- [Mississippi Youth Programs Around the Clock](#) (MYPAC)
- [Psychiatric Rehabilitation Treatment Facilities](#) (PRTF)

All authorization and claim processes are outlined in the Mississippi Optum Network Manual Addendum, Level of Care Guidelines and Quick Reference Guides [MYPAC Training Deck & PRTF Training Deck](#) that will outline each service.

Services rendered on or after October 1, 2018 will be processed according to your current Optum Provider Participation Agreement and corresponding Payment Appendix and/or fee schedules.

Some exclusions may apply to provider network status; providers for these services must be [Mississippi Division of Medicaid Certified](#) before services can be approved.

Quality healthcare through insight and innovation

Optum is breaking new ground in behavioral health. By connecting people to top-quality, high-impact, integrated care and engaging them in their own wellness, Optum is driving better overall health outcomes while bringing down the total cost of care.

If you have any questions, please contact dedicated Mississippi Network Managers: Rusty Palmer james.palmer@optum.com or Dawn M. Teeter dawn.teeter@optum.com